

IRU Connected



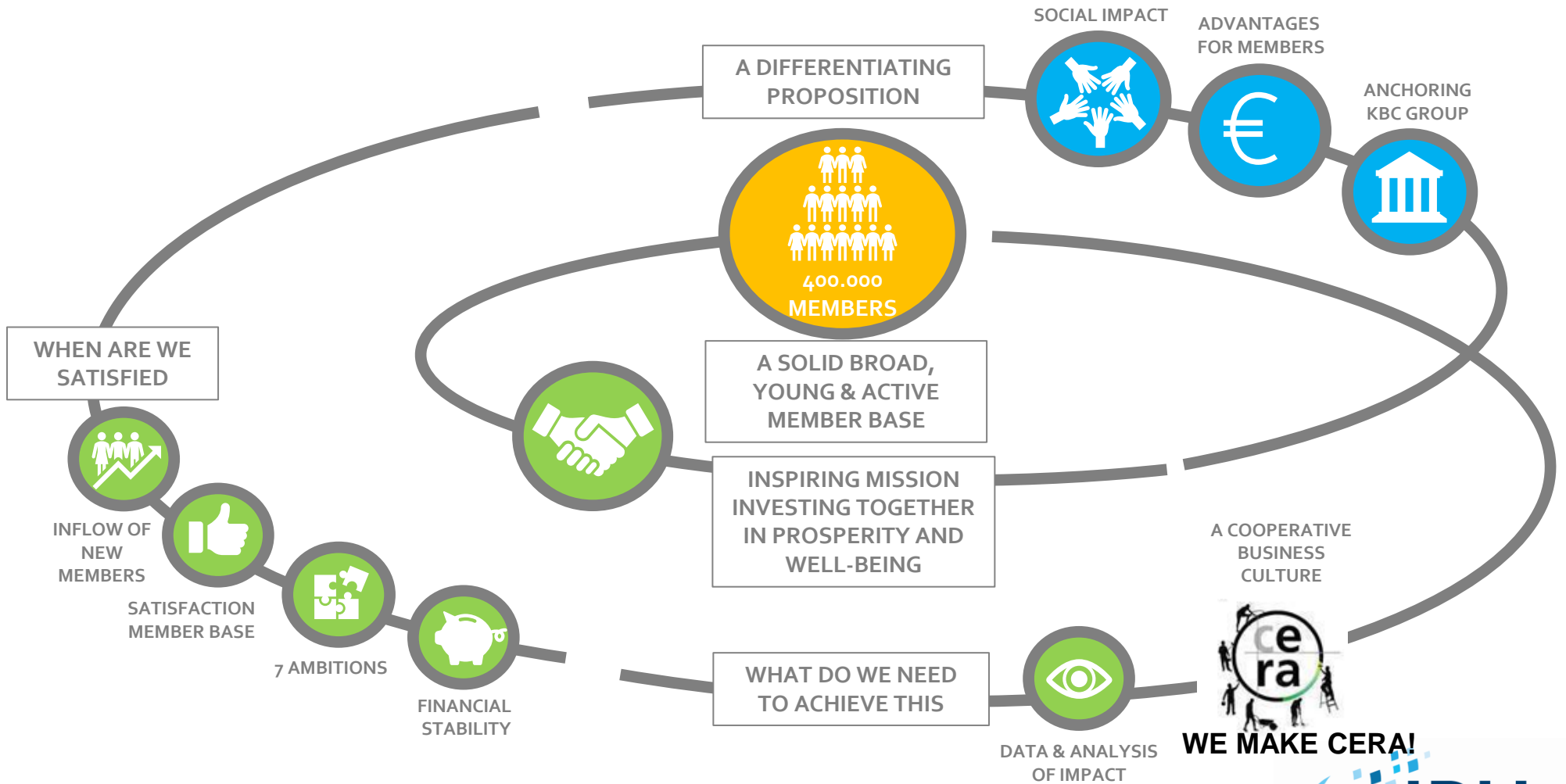
Cera CV - Leuven - Belgium / 17th of November 2020
Alain Baeck - Kurt Moors



What is currently moving us the most is ...

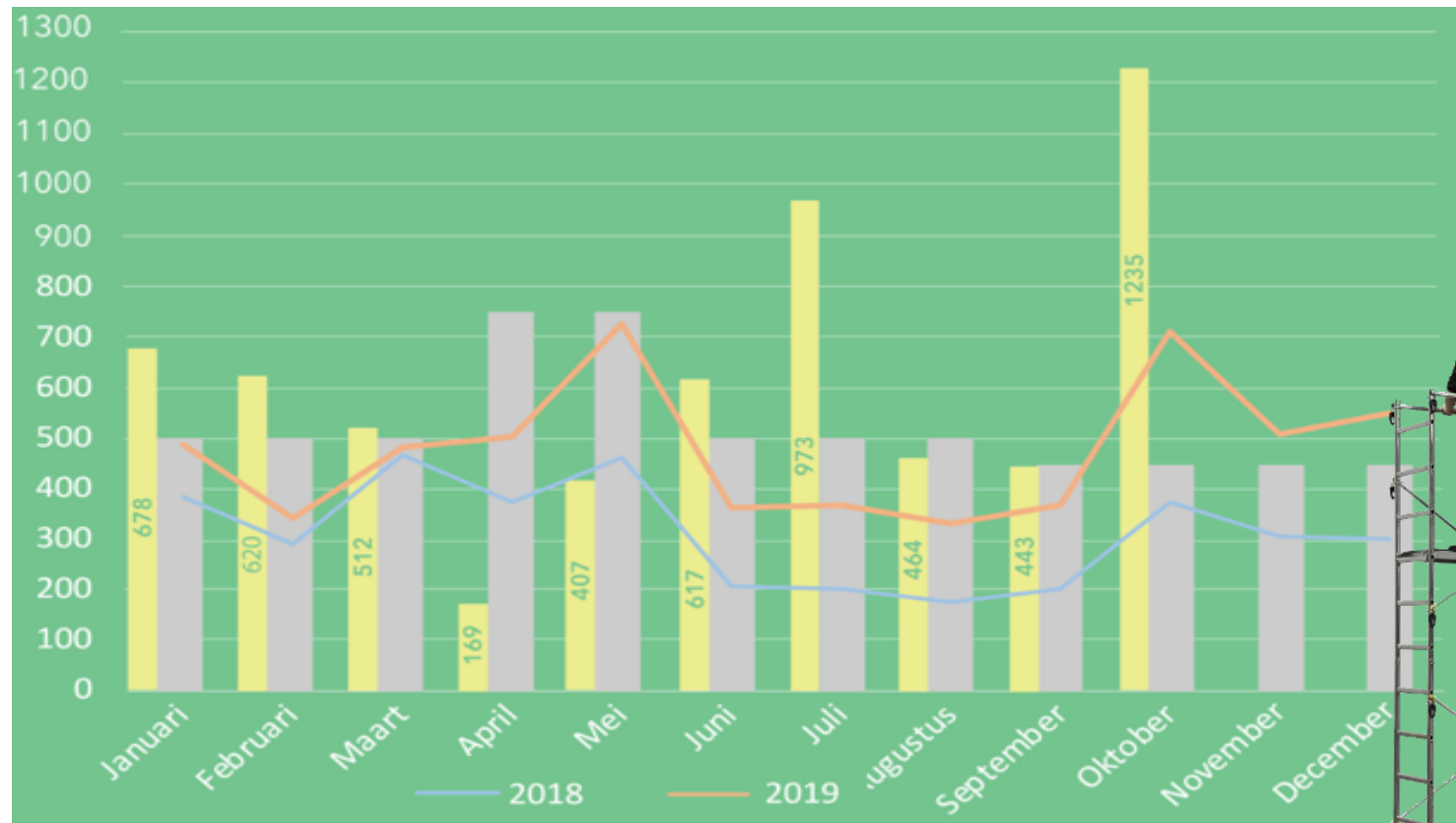


- STRATEGIC PROJECT 2025



Our latest breaking news is ...

- Despite Covid-19 we already reached our 2020 target recruiting new members in October, and still 2 months to go



Description & Figures

- Creation of member organisation: 1892
- # of staff: 49 colleagues
- Sites: www.cera.coop , www.kbcancora.be , www.brs.coop ,
- Sectors active / Activities & Services:
 - Cera: strategic shareholder of KBC Group
 - BRS: supporting microfinance and -insurance in the South, and increasing awareness about microfinance in Belgium
- Countries / Regions active:
 - Cera: Belgium,
 - BRS: Africa, Latin-America and Asia & Belgium

Current Situation in 5 images



Cooperation with IRU Members

Existing cooperation with IRU members:

1. Exchange of ideas with the IRU members in the ad hoc working groups within IRU
2. Cooperation within the EACB (European Association of Cooperative Banks)
3. Cooperation within Cooperatives Europe (Cooperatives Europe Development Platform)
4. Exchange of ideas with DGRV (Deutscher Genossenschafts- und Raiffeisenverband)
5. Cooperation with ADG (Academy of German Cooperatives)

What does IRU mean to you?

- Describe in up to **3 words** what you associate with IRU:
 1. a **unique** family connected by the same principles
 2. grouped in a **network** with skills and expertise in many domains
 3. offering a **high potential** for common projects in the field

— ...

Added Value

- **What is the most important (potential) added value from your IRU membership?**
 - window to the world
 - shared vision on purpose driven financial services
 - potential for development of staff
 - platform for networking and exchange

Expectations

- **What are your 3 expectations from IRU?**
 - 1. frequent exchange of expertise between members**
 - 2. collaboration in common projects**
 - 3. pooling of resources (intellectual, financial) to get members involved in topics related to sustainable development**
 - ...

(EACB) is pleased...

[Read more](#) ▶



BRS Online Event: The Microfinance Lunch Talk

Allgemein • November 9, 2020

The Belgian Raiffeisen Foundation (BRS), is inviting to the next Microfinance Lunch Break. The Microfinance Lunch Break is a biannual...

[Read more](#) ▶



The Poverty stoplight. How to keep people at the steering wheel of their own future.

By Martin Burt, ceo of Fundación Paraguaya.

Let's exchange!





Thank you very much!

Cera CV

Muntstraat 1

3000 Leuven / Belgium

+32 0800 62 340

Mail: info@cera.coop

www.cera.coop

Kurt Moors
general coördinator BRS
kurt.moors@cera.coop

Alain Baeck
regional advisor
alain.baeck@cera.coop

